



# Tiger Print



## April 4, 2024

Thursday	4	3:30 pm	LEGOS Club Gr 2-4
Friday	5		Mrs. Craker Day!
Monday	8		Solar Eclipse Today!
		6:30 pm	Board of Christian Education
Wednesday	10	6:00 pm	Jr. Youth

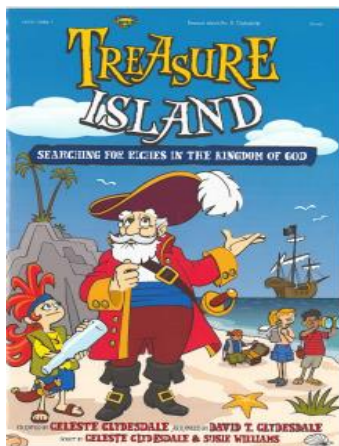
## CHOIR SCHEDULE

April	7	Jr. Choir
	14	Children's Choir
	21	Cherub Choir
May	12	Cherub Choir
	19	Children's & Jr. Choir

Children are asked to arrive 15 minutes before service. Choir attendance at worship services and special events will count on the student's grade.



Cherub Choir Kindergarten-2<sup>nd</sup> Grade  
 Children's Choir 3<sup>rd</sup>-5<sup>th</sup> Grade  
 Jr. Choir 6<sup>th</sup>-8<sup>th</sup> Grade



## SAVE THE DATE

SPRING MUSICAL \*\* Friday April 26<sup>th</sup>  
 Grades 3<sup>rd</sup> – 5<sup>th</sup> will present the production of  
 "Treasure Island"



Help us Celebrate Mrs. Craker's birthday by wearing your Reedsburg Beaver apparel, in honor of her 8<sup>th</sup> grades students going into high school! Happy Birthday Mrs. Craker!



## VOLUNTEERS NEEDED FOR TEACHER APPRECIATION LUNCH

We are looking for parent volunteers to help manage classrooms on Tuesday, May 7th during our teacher appreciation luncheon. Current background checks are required and you may sign up here: <https://www.signupgenius.com/go/30E0449ADAC2BA0F85-48666231-classroom>

### ST. PETER'S \*\*\* IS WISCONSIN SCHOOL CHOICE

This program is a state-wide program that allows families to apply for state aid that will cover your tuition cost to attend St. Peter's School. Currently this program is available for the 2024-2025 school year for St. Peter's students entering PRE-K 4, Kindergarten and 1<sup>st</sup> grade, or students that are new to St. Peter's in PRE-K 4 - 8<sup>th</sup> grade. Applications may be found online at <http://dpi.wi.gov/sms/choice-programs/student-applications>. **Applications are being accepted February 1 - April 18, 2024. If you have any question, or would like some assistance in the application process, please stop by the office. We will be happy to help.**



### EXISTING SCHOOL CHOICE FAMILIES

A reminder that you too will need to log-on to the website above and claim your seat for the 2024-25 school year.

### ALL SCHOOL CHOICE FAMILIES

Please be reminded, there is additional paperwork needed to complete the verification process. Please bring in the necessary documents to the school office as soon as possible. Thank you.

### FORWARD EXAM TESTING

FORWARD EXAM STATE TESTING includes grades 3<sup>rd</sup> – 8<sup>th</sup>. This testing will begin Wednesday, April 3. The majority of testing will be conducted in the mornings. It has been proven that a good night's sleep and a healthy breakfast will help students perform to their highest level. Also, please make every effort to have your child in attendance during these tests. All tests have to be made up and it is very difficult for teachers to fit this into their daily routine once the testing days are over.

### CLUB CHOICE FUNDRAISING



Students brought home a packet on Tuesday. We were supposed to have our kick-off but unfortunately with the early release we did not get to have this. So, remember, this is not just a Pizza Sale anymore!! Items include pizza, cookies, desserts, pantry favorites and FLOWERS!! If you order online, there are so many other options to purchase much more, than what is in the catalogs that came home. **Orders are due by April 15<sup>th</sup> with delivery on May 8<sup>TH</sup>, just in time for Mother's Day.**

**50% of the profits from your orders will be credited to your lunch and/or tuition account!!**

\*\*\*\*\*



There will be a father (grandpa, uncle, brother) daughter dance at the Reedsburg Country Club on Saturday April 6<sup>th</sup>, from 6:00-8:00 pm. Tickets are \$25.00 for father/daughter, and \$5.00 for each additional daughter, and may be purchased at the Reedsburg Chamber.

\*\*\*\*\*



**LWML**  
**“ANYTHING PLANTS EVENT II”**

Saturday, May 4, 2024, 9:00-Noon  
Church/School parking lot

***What is an “Anything Plants Event”?***

Dig up your perennials, divide a house plant, donate seedlings you have started, donate flowers or vegetables from a nursery, donate a hanging plant - anything flower, vegetable, or fruit. Start bringing your plants in a labeled container starting at 9:00 a.m. and then take a look to see if you like anything. OR, you do not have to donate anything, but please come to take a plant(s) to add to your home or garden. We are taking a free will donation which will go toward our LWML Mission Grants. Spread the word to your family and friends; anyone in our community can attend and participate. This was a lot of fun and interesting last year raising over \$500. 00! Oh, what a difference these plants can make in spreading the Gospel!

If you are unable to bring your plants on May 4, call Julie Thompson @608/495-0474 to make other arrangements.

.....



**PINT SIZE JARS** Daycare is collecting pint size jars or similar size jars. If you have any at home that you are willing to donate you can drop them off at daycare, or in the school office.



# Open House

April 11th, 4-7pm

345 N. Pine St.

Reedsburg, WI 53959

## Experience St. Peter's Lutheran School

Faith-Integrated Learning Guided by Grace

Curious about how our school operates?

Want to know more about our programming?

Visit and See what St. Peter's Lutheran School

offers to the Reedsburg Community!



New and Current Families are encouraged to attend!

Meet the Principal, Teachers, Coaches, Parents, & Students

Hourly "Teacher Talks" - Experience School as a Student!

Learn about NEW Pre-K Program Updates including new days,

times and classroom!

\*Drawing\* - Enter for a chance to win \$100 off your Tuition!

Snacks Served

Join Us!



OPEN ENROLLMENT begins April 19th

Enrollment for current families begins April 4th

Contact us for Information!

(608)524-4066 ext. 1

stpetersreedsburg@gmail.com



Watch our Facebook page for Updates on this Event!

stpetersreedsburg.com