



# Tiger Print

## Mission Statement

St. Peter's Lutheran School exists to provide a nurturing, Christian educational environment which assists families in their God-given responsibility of preparing children for an earthly life of Christian witness and eternity with their Lord and Savior.

## January 12, 2017

Thursday	12	7:00 p.m.	A-Team Girls' Basketball @ St. Luke's, Plain
Friday	13		GREEN & GOLD DAY - Go Pack Go!!
		8:00 a.m. - 1:15 p.m.	2 <sup>nd</sup> Grade @ Overture Center
Tuesday	17	8:30 a.m.	Kindergarten @ Public Library
		5:00 p.m.	B-Team Girls' Basketball - Home vs. St. John, Portage
Wednesday	18	8:20 a.m.	Chapel
		6:30 - 8:30 p.m.	Sr Youth
Thursday	19	8:15 - 11:15 a.m.	Kindergarten @ Hartje Center
		12:30 - 3:00 p.m.	5 <sup>th</sup> Grade @ White Mound
			Pre-K3 Parent Teacher Conferences
		4:15 p.m.	A-Team Girls' Basketball @ Webb Middle School
		5:00 p.m.	B-Team Girls' Basketball @ St. Joe's, Baraboo
Friday	20		End of 2 <sup>nd</sup> Quarter
			Pre-K3 Parent Teacher Conferences
		6:00 p.m.	PTL Family Movie Night

## CHURCH ATTENDANCE



Church attendance among our students is important for their spiritual growth and witness. Please make weekend worship part of your family life and invite others to join you.

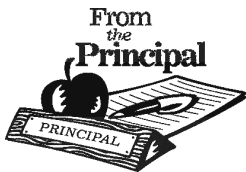
<u>K</u>	<u>1<sup>st</sup></u>	<u>2<sup>nd</sup></u>	<u>3<sup>rd</sup></u>	<u>4<sup>th</sup></u>	<u>5<sup>th</sup></u>	<u>6<sup>th</sup></u>	<u>7<sup>th</sup></u>	<u>8<sup>th</sup></u>	<u>Overall</u>
95%	94%	100%	100%	93%	100%	93%	93%	94%	96%



January 15	8:00 a.m.	Children's Choir
22	10:30 a.m.	Jr. Choir

**Students should arrive at Concordia Hall 15 minutes before the service begins to warm up.**

Cherub Choir: Kindergarten - 2<sup>nd</sup> Grade      Children's Choir: 3<sup>rd</sup> - 5<sup>th</sup> Grade      Jr. Choir: 6<sup>th</sup> - 8<sup>th</sup> Grade



Next week is the last week of the first semester of this school year. We encourage all students who may have gotten a bit behind in their school work to make a strong effort to get caught up this week. Parents, support your students in their work and help them to make and meet some good goals.

"Trust in the Lord forever for the Lord God is an everlasting rock"  
Isaiah 26:4



## YOUTH NEWS...

- **SR YOUTH** will meet on January 18<sup>th</sup> from 6:30-8:30pm. Devotion: Unity in the Body of Christ/Instructions for Christian Living
- 
- **JR YOUTH** will meet on January 25<sup>th</sup> from 6-8pm. Devotion: Let's Talk About Friendships

### **JR YOUTH HOONTING AND GARGOYLES – January 22**

We will gather at St. John Lutheran Church from 6:30 to 8:30pm. Hoonting is an indoor paintball/capture the flag game using pvc pipe and nerf darts and Gargoyles is a freeze tag game. Come join in on the fun!!

If you have any questions about this event, please contact me anytime at [608-477-1159](tel:608-477-1159) or by email at [jenniferanderson@saintpetersls.com](mailto:jenniferanderson@saintpetersls.com).



The Annual Jump Rope Contest for 1 - 8<sup>th</sup> grade students was held on Thursday. Watch next week's Tiger Print for those who have qualify to compete in the State contest in Bloomer, WI, the Jump Rope Capital of the World, on January 28<sup>th</sup>, 2017.

Our speedy jumpers competing are:

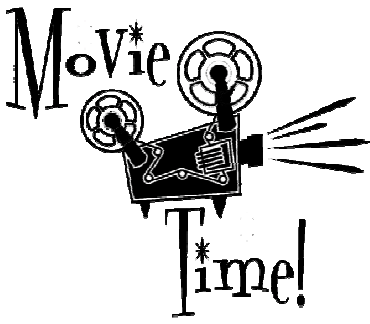
- 1<sup>st</sup> Grade: Lindsey Lichte, Kallie Parrish, Lainee Skinner  
2<sup>nd</sup> Grade: Gracie Roloff, Dayne Schultz, Grant Weber  
3<sup>rd</sup> Grade: Kendra Daniels, Noah Herritz, LeeLu Nicolaus  
4<sup>th</sup> Grade: Callie Curtin, Jack Fenwick, Alaina Murray  
5<sup>th</sup> Grade: Chloe Klitzke, Peyton VanMeeteren, Emma Herritz  
6<sup>th</sup> Grade: Madeline Corbin, Anna Glick, Kaylee Gleash  
7<sup>th</sup> Grade: Cassidy Klitzke, Summer Thompson, Ella Halvensleben  
8<sup>th</sup> Grade: Quinn Schuppner, Anna Meyer, Josh Corbin

### **PRE-KINDERGARTEN REGISTRATION**

We are now accepting applications for our Prekindergarten classes for the 2017-2018 school year. We will be offering two 3-year old classes and one 4-year old class. Space is limited so enroll early!! Applications may be picked up at the office, found online at [www.stpetersreedsburg.com](http://www.stpetersreedsburg.com) or you may request that an application be mailed to you by calling 524-4066, ext. 1.

### **ST. PETER'S JOINS THE WISCONSIN SCHOOL CHOICE VOUCHER PROGRAM**

This program is a state-wide program that allows families to apply for state aid that will cover your registration and tuition cost of attending St. Peter's School. Currently this program is available for the 2017-2018 school year for St. Peter's students entering PRE-K 4, Kindergarten and 1<sup>st</sup> grade, or students that are new to St. Peter's in PRE-K 4 - 8<sup>th</sup> grade. Applications maybe found online at <http://dpi.wi.gov/sms/choice-programs/student-applications>. Applications are being accepted February 1<sup>st</sup> - April 20<sup>th</sup>, 2017. **If you have any question, or would like some assistance in the application process, please stop by the office, we will be happy to help.**



**PTL** is hosting Family Movie Night on Friday, January 20. Featured movie for the evening is "The Peanuts Movie" with show time to begin at 6:00 p.m. Bring your comfy chair, bean bag and pillows and enjoy the movie on the BIG screen in the school gym. Movie time snacks will be available for purchase.

### **AMAZON IS SMILING ON ST. PETERS!!!**

Are you an Amazon shopper?? St. Peter's is now registered with Amazon Smile! If you place your order through <https://smile.amazon.com/ch/39-0851417>, St. Peter's School will receive a percentage of your purchase. AND...we sell Amazon SCRIP in \$25 & \$100 increments. Make your purchase with Amazon SCRIP and you receive 50% of our profit to be credited to your lunch or tuition account. EVERYONE'S A WINNER!!!



### **WHAT DOES IT MEAN TO BE AN ACTIVE MEMBER OF ST. PETER'S LUHTERAN CHURCH??**

The St. Peter's School Handbook encourages all families to attend church 50% of the time.

This is a very important part of determining member and non-member tuition rates at St. Peter's School. Member tuition rates will be charged based on the following guidelines:

- If you are a member of St. Peter's Church and your family has attended 50% of worship services, member tuition rate will apply. If attendance of 50% or greater has not been met, non-member rates will be charged for the 2017-2018 school year.

Church attendance will be reviewed August 1st of each year to determine your tuition rate for the upcoming school year. Attendance will be recorded from attendance cards at church.

### **CHURCH OFFERING ENVELOPES**

If you have not had the opportunity to pick up your 2017 church offering envelopes, they have been sent home with your children. Please check their backpack!! Thank you.



**GREEN & GOLD DAY -- GO PACK GO!!**

**GREEN BAY PACKERS, NFC NORTH CHAMPIONS ARE IN THE PLAY-OFFS.  
Friday, January 13<sup>th</sup>, is Green & Gold Day!!!**